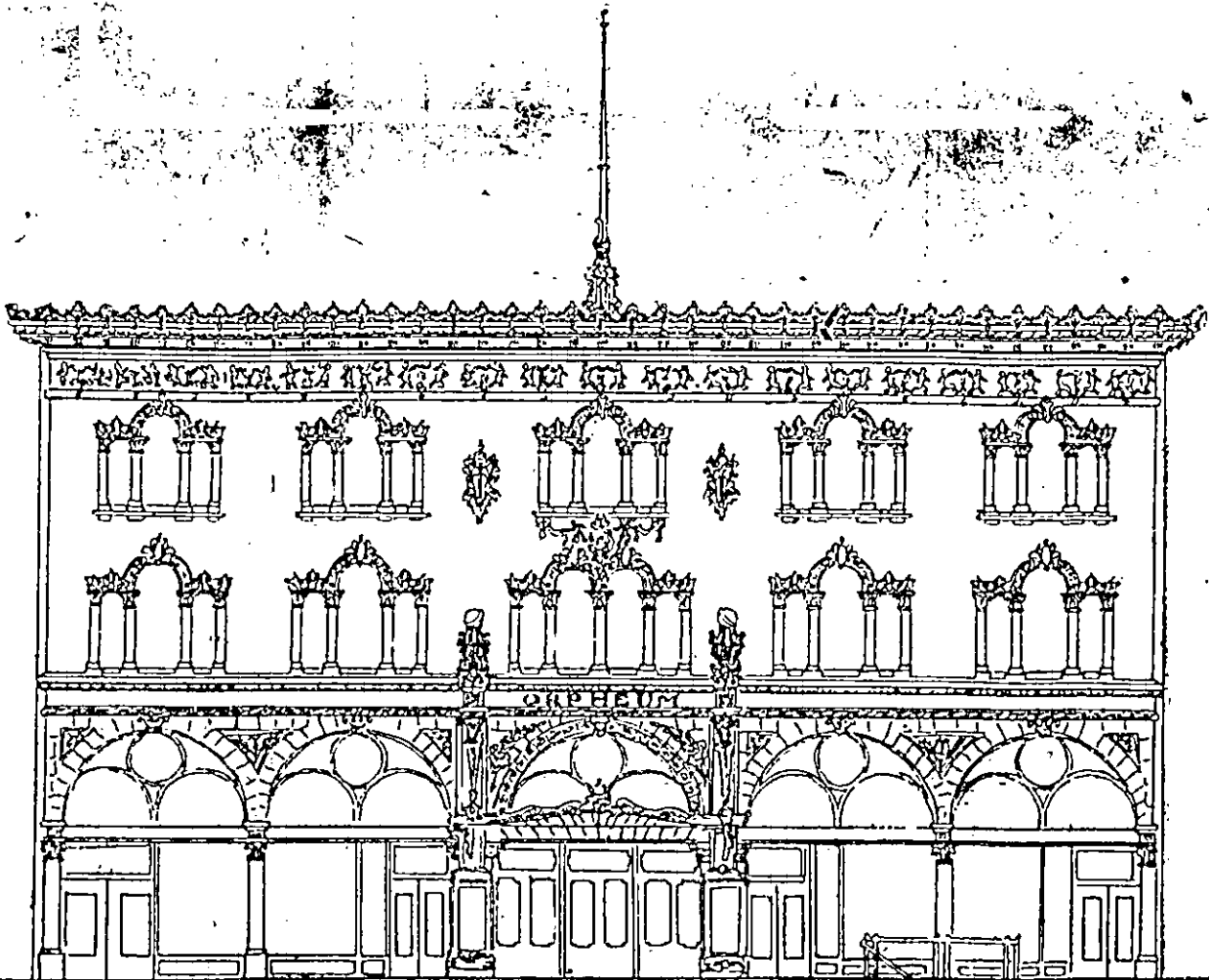


NEW ORPHEUM THEATRE SOON TO BE BUILT ON WEST SECOND SOUTH STREET



The finest and most up to date vaudeville theatre west of Chicago will be built this year by the Salt Lake Orpheum and Realty company on the site formerly occupied by the Salt Lake Hardware company at 50 to 60 West Second South street.

Though the plans specify for elegance both externally and internally, the safety and comfort of patrons have been given first consideration, according to the architects. The plans presented by Architect C. Albert Lansburg of San Francisco have been accepted and work will be completed quickly. This is the third of a series of Orpheum theatres designed by Mr. Lansburg, and the house planned for Salt Lake City will be more elaborate and elegant than either of the others. One of these has been built in Los Angeles and the other in San Francisco. Safety First Consideration.

The Salt Lake Orpheum will incorporate all of the best features of these other houses planned by Mr. Lansburg, and also many new ones that will be installed for the first time in the west at the local house. The theatre will be absolutely fireproof, though the modes of exit, the arrangements of the aisles

and general arrangement of space throughout the theatre are expected to insure the most rapid means of egress provided by any theater in America.

The stage will be equipped with the latest fire water curtain, which works automatically should a fire originate on the stage. In addition to this the stage and all accessories will be sprinkled and the system of air circulation will be such that should a fire break out on the stage the draughts of air will draw the flames away from the balcony and auditorium.

This air system is simply an added precaution, as it is impossible for flames to penetrate the fire curtain, which is a veritable sheet of water cutting off the main body of the house from the stage. The construction throughout will be of steel and reinforced concrete. All exterior openings and windows will be protected by underwriters' metal doors, windows and skylights.

View Is Unobstructed.

In addition to providing for the safety of the patrons the builders will incorporate all the latest features calculated to insure every comfort to the audience. There will be no columns in the auditorium, the balcony being supported by a clear girder span. Many

innovations have been arranged for the foyer, lavatories, retiring rooms and the nursery. The total seating capacity will be about 2000, while there will be ample space allowed between rows and the seats will be of the newest and most comfortable type. There will be twelve boxes, three on each side of the lower floor and three at each side of the house above the stage. The long gradual sloping balcony will be installed, and there will be no gallery.

Both the interior and exterior appearance of the house will, in many respects, resemble the Los Angeles Orpheum, conceded by many architects to be one of the handsomest vaudeville houses in America. The artistic scheme of the direction for lobby, foyer, auditorium and ceiling has been designed from the French school, and will be a new idea as compared with anything on the coast.

The front elevation will be in keeping with the interior of the house and will present an elegant appearance. The design for the front exterior will be of polychrome and terra cotta. Taking everything into consideration the new Salt Lake Orpheum will equal in every respect any vaudeville house in America, according to the architect, and will be a valuable addition to the many new and elegant buildings in this city.