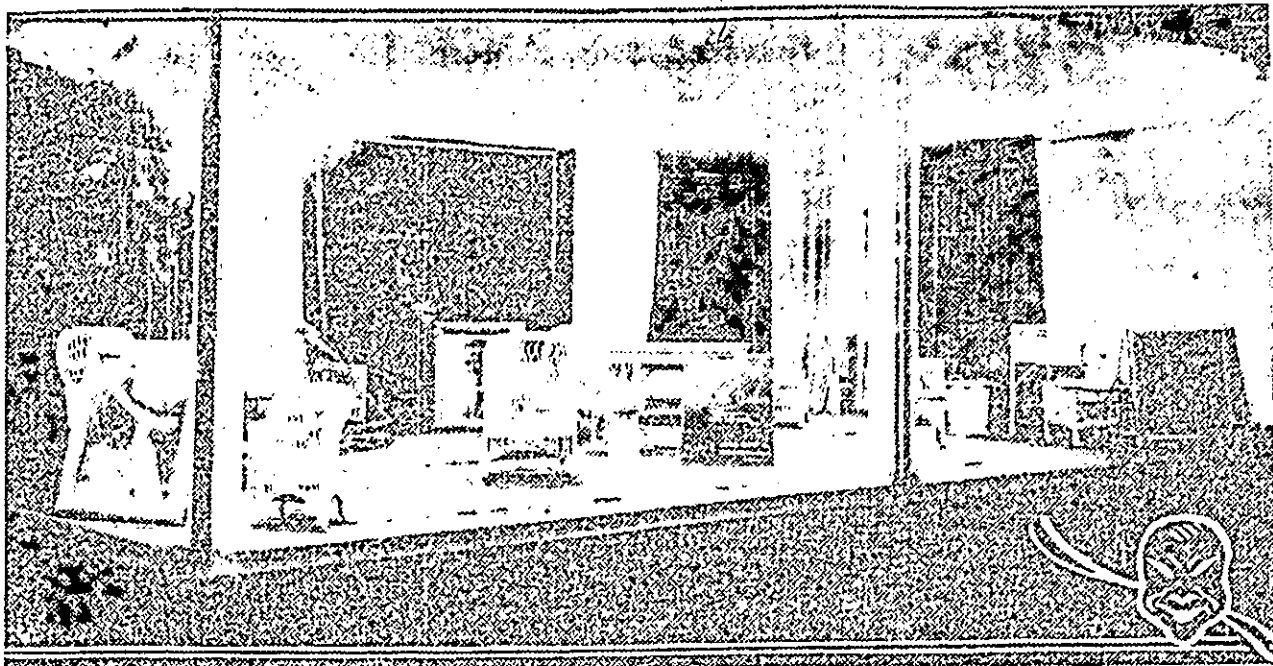


New Kinema Theatre Furniture Shown

DRESSING TABLES, lounge, settee, chairs, lamp and other articles of furniture finished in robin's egg blue and French gray, which are to be used in the women's rest room of the new Kinema theatre. Hangings in the background are of heavy velvet in rich colors. Oil paintings seen in the picture are of famous moving picture players, and will be hung in the lobby of the new theatre. The furniture is on display at the J. A. Greenwald Furniture company.



FURNISHINGS for the new Kinema theatre women's restroom, which are now on exhibition in the show windows of the J. A. Greenwald Furniture company, 543 S. Fourth East, are attracting the attention of many people because of their beauty and taste in form and arrangement.

Manager William Cutts of the new theatre, which will be one of the finest in Salt Lake, says the furnishings for the restroom are placed temporarily in the show windows until the theatre opens. This, he believes, will be in two or three weeks.

The new enterprise is to occupy part of the Cliff building, which is now having the finishing touches put upon it by the workmen.

From the smallest taboret to the lounge and hangings, the furnishings are a symphony in arrangement of color and form. The furniture, which is of wicker, is finished in robin's egg blue, with the exception of two pieces which are finished in French gray. Besides easy chairs there is a lounge, settee, dressing tables and a beautiful electric lamp which will occupy an alcove partially screened by rose and gold velvet hangings. Another of the hangings is of midnight blue and gold. The entire effect is a beautiful combination in adornment.

Oil paintings of famous moving picture stars will be hung in the lobby of the theatre, which will be finished in Utah marble. These paintings are of Douglas Fairbanks, Alla Nazimova, Harry Carey and Dorothy Phillips, and they are framed in gold.

One of the novel things about the Kinema theatre will be glass-enclosed projection machines which are placed in the lobby where patrons may watch them work while passing through to the auditorium. The theatre will seat 300 people.